

HUSQVARNA OUTDOOR PRODUCTS ITALIA

| PNC | Type/ Prefix/ nd | Model | Brand |
|------------|---------------------------------|------------------|--------------|
| 953900751 | 02 | CABRIO PLUS 437B | McCulloch |
| 953900753 | 02 | CABRIO PLUS 467B | McCulloch |
| 953900755 | 02 | CABRIO PLUS 497B | McCulloch |

Number of Pages 1 of 5

| | |
|--|-----------------------------|
| Factory: IIQ - Valmadrera | Product Group: OP 93 |
| Publication Number: MIPL2007_V040000003 | Petrol Portable |
| Publication Date: 22/01/07 | Sub Group 9433 |

FIGURE 1

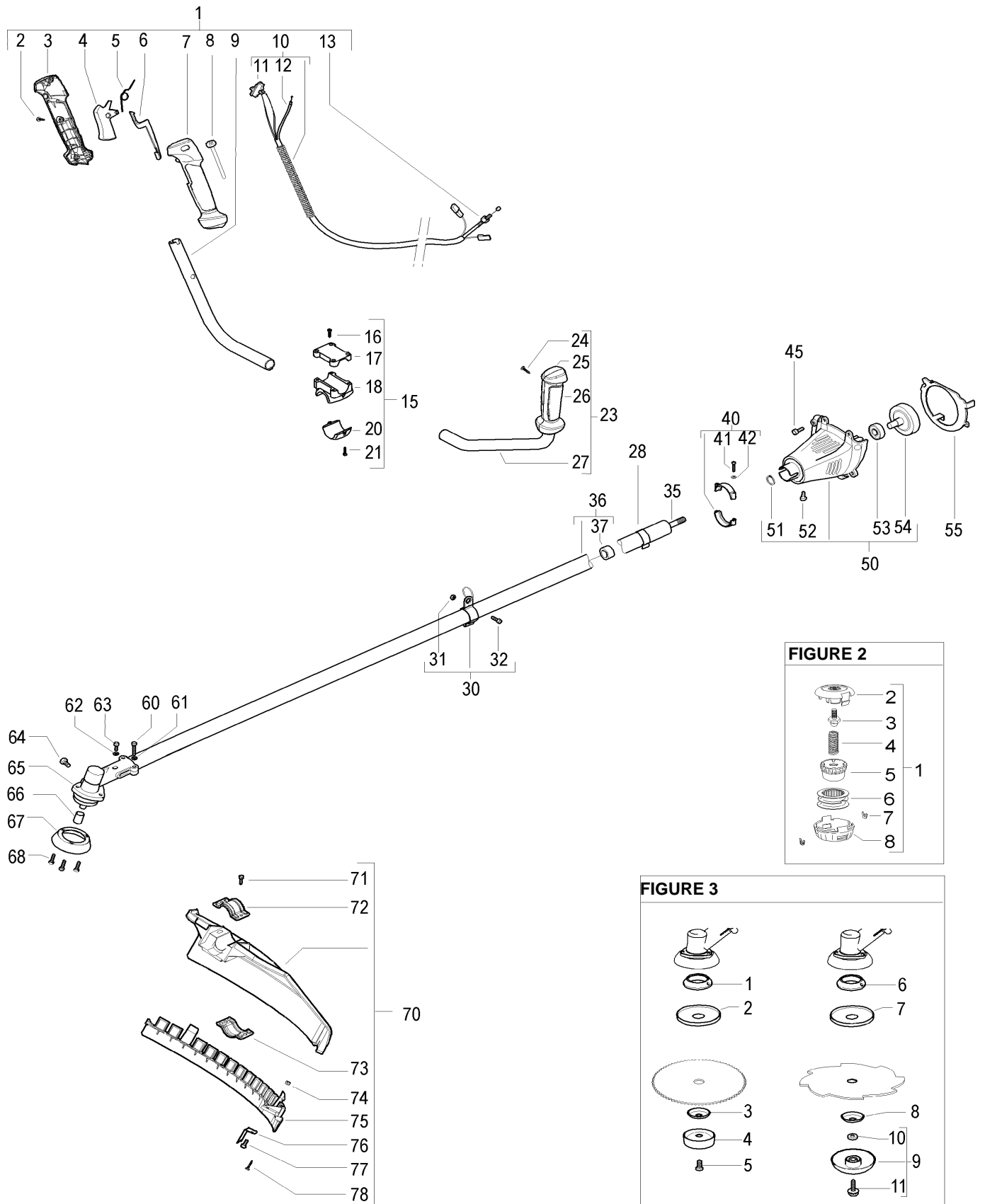


FIGURE 2

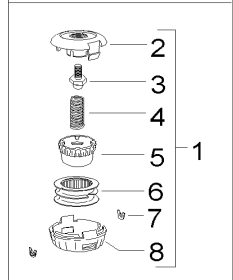
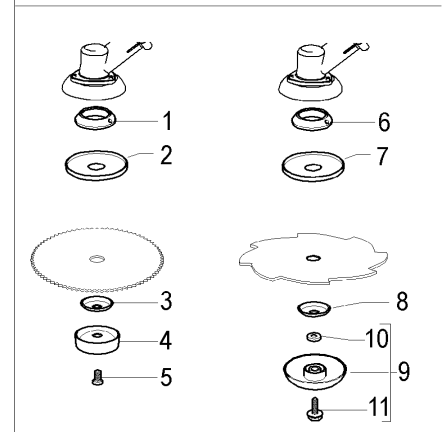


FIGURE 3



| Item | P/N McC | P/N ELX | Qty | DESCRIPTION |
|-----------------|-----------|-----------|-----|---------------------------|
| FIGURE 1 | | | | |
| 1 | 243563 | 538243563 | 1 | right handle assy |
| 2 | • 240862 | 538240862 | 3 | screw 4x18 |
| 3 | • 242533 | 538242533 | 1 | right handle (right half) |
| 4 | • 242537 | 538242537 | 1 | throttle trigger |
| 5 | • 242540 | 538242540 | 1 | trigger spring |
| 6 | • 242538 | 538242538 | 1 | safety lever |
| 7 | • 242534 | 538242534 | 1 | right handle (left half) |
| 8 | • 242539 | 538242539 | 1 | throttle advance |
| 9 | • 242605 | 538242605 | 1 | right handle bar |
| C 10 | • 243566 | 538243566 | 1 | wires assy |
| 11 | •• 242439 | 538242439 | 1 | switch |
| C 12 | •• 243569 | 538243569 | 1 | throttle cable |
| 13 | • 235912 | 538235912 | 1 | nut M6 |
| 15 | 243083 | 538243083 | 1 | handle clamp assy |
| 16 | • 235803 | 538235803 | 4 | screw M5x25 |
| 17 | • 242200 | 538242200 | 1 | upper clamp |
| 18 | • 243082 | 538243082 | 1 | handle clamp |
| 20 | • 242900 | 538242900 | 1 | lower clamp |
| 21 | • 229077 | 538229077 | 2 | screw M5x18 |
| 23 | 243565 | 538243565 | 1 | left handle assy |
| 24 | • 240862 | 538240862 | 2 | screw 4x18 |
| 25 | • 242536 | 538242536 | 1 | left handle (right half) |
| 26 | • 242535 | 538242535 | 1 | left handle (left half) |
| 27 | • 242606 | 538242606 | 1 | left handle bar |
| 28 | 229849 | 538229849 | 1 | cable retainer |
| 30 | 237783 | 538237783 | 1 | harness ring assy |
| 31 | • 236642 | 538236642 | 1 | nut M6 |
| 32 | • 243852 | 538243852 | 1 | screw M6x20 |
| 35 | 229829 | 538229829 | 1 | transmission shaft |
| 36 | 243277 | 538243277 | 1 | outer shaft |
| 37 | • 236383 | 538236383 | 5 | bushing ass'y |
| 40 | 248805 | 538248805 | 1 | clamp assy |
| 41 | • 248804 | 538248804 | 2 | screw M5x30 |
| 42 | • 236529 | 538236529 | 2 | grower d.5 |
| 45 | 242174 | 538242174 | 4 | screw M5x20 |
| 50 | 243761 | 538243761 | 1 | mount ass'y |
| 51 | • 236378 | 538236378 | 1 | snap ring |
| 52 | • 235802 | 538235802 | 1 | screw M5x14 |
| 53 | • 235918 | 538235918 | 1 | ball bearing |
| 54 | • 227284 | 538227284 | 1 | clutch drum |
| 55 | 242398 | 538242398 | 1 | diaphragm |
| 60 | 235804 | 538235804 | 2 | screw m5x30 |
| 61 | 236529 | 538236529 | 2 | grower |
| 62 | 236529 | 538236529 | 1 | grower |
| 63 | 236381 | 538236381 | 1 | screw m5x10 |
| 64 | 240151 | 538240151 | 1 | screw M8x10 |
| 65 | 240824 | 538240824 | 1 | gear box ass'y |
| 66 | 247272 | 538247272 | 1 | spacer |
| 67 | 240767 | 538240767 | 1 | flange guard |
| 68 | 240688 | 538240688 | 3 | screw+washer |

| Item | P/N McC | P/N ELX | Qty | DESCRIPTION |
|------|----------|-----------|-----|-------------------------|
| A 70 | 248960 | 538248960 | 1 | d.30 safety guard ass'y |
| 71 | • 227563 | 538227563 | 2 | M5x16 screw |
| 72 | • 242636 | 538242636 | 1 | upper clamp |
| 73 | • 242752 | 538242752 | 1 | lower clamp |
| 74 | • 229208 | 538229208 | 2 | nut M5 |
| 75 | • 242630 | 538242630 | 1 | string head guard |
| 76 | • 241973 | 538241973 | 1 | line cutter |
| 77 | • 227563 | 538227563 | 2 | M5x16 screw |
| 78 | • 240862 | 538240862 | 1 | screw 4x18 |

| FIGURE 2 | | | | |
|-----------------|-------------|-----------|---|----------------------|
| A 1 | 531025002 | 531025002 | 1 | P 35 trimmer head |
| 2 | • 537421501 | 537421501 | 1 | body |
| 3 | • 537427901 | 537427901 | 1 | adapler P35 |
| C 4 | • 537186001 | 537186001 | 1 | spring T35 |
| C 5 | • 537421801 | 537421801 | 1 | knob |
| C 6 | • 537421701 | 537421701 | 1 | spool (without line) |
| C 7 | • 537419701 | 537419701 | 2 | bushing |
| 8 | • 537421601 | 537421601 | 1 | cover |

| FIGURE 3 | | | | |
|-----------------|----------|-----------|---|----------------|
| A 1 | 242475 | 538242475 | 1 | flange |
| A 2 | 241155 | 538241155 | 1 | grass shield |
| A 3 | 229834 | 538229834 | 1 | flange |
| A 4 | 236596 | 538236596 | 1 | cup |
| A 5 | 229842 | 538229842 | 1 | cup screw |
| A 6 | 242410 | 538242410 | 1 | flange |
| A 7 | 241155 | 538241155 | 1 | grass shield |
| A 8 | 229834 | 538229834 | 1 | flange |
| A 9 | 240809 | 538040809 | 1 | idle cup |
| 10 | • 240807 | 538240807 | 1 | spacer |
| A 11 | • 240806 | 538240806 | 1 | idle cup screw |

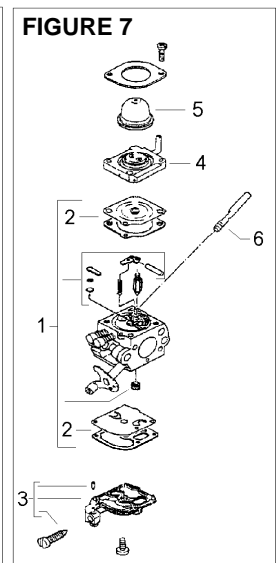
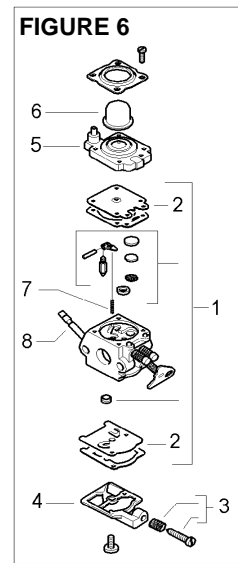
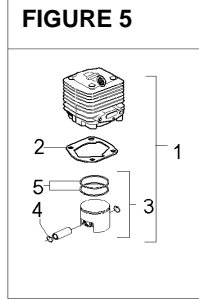
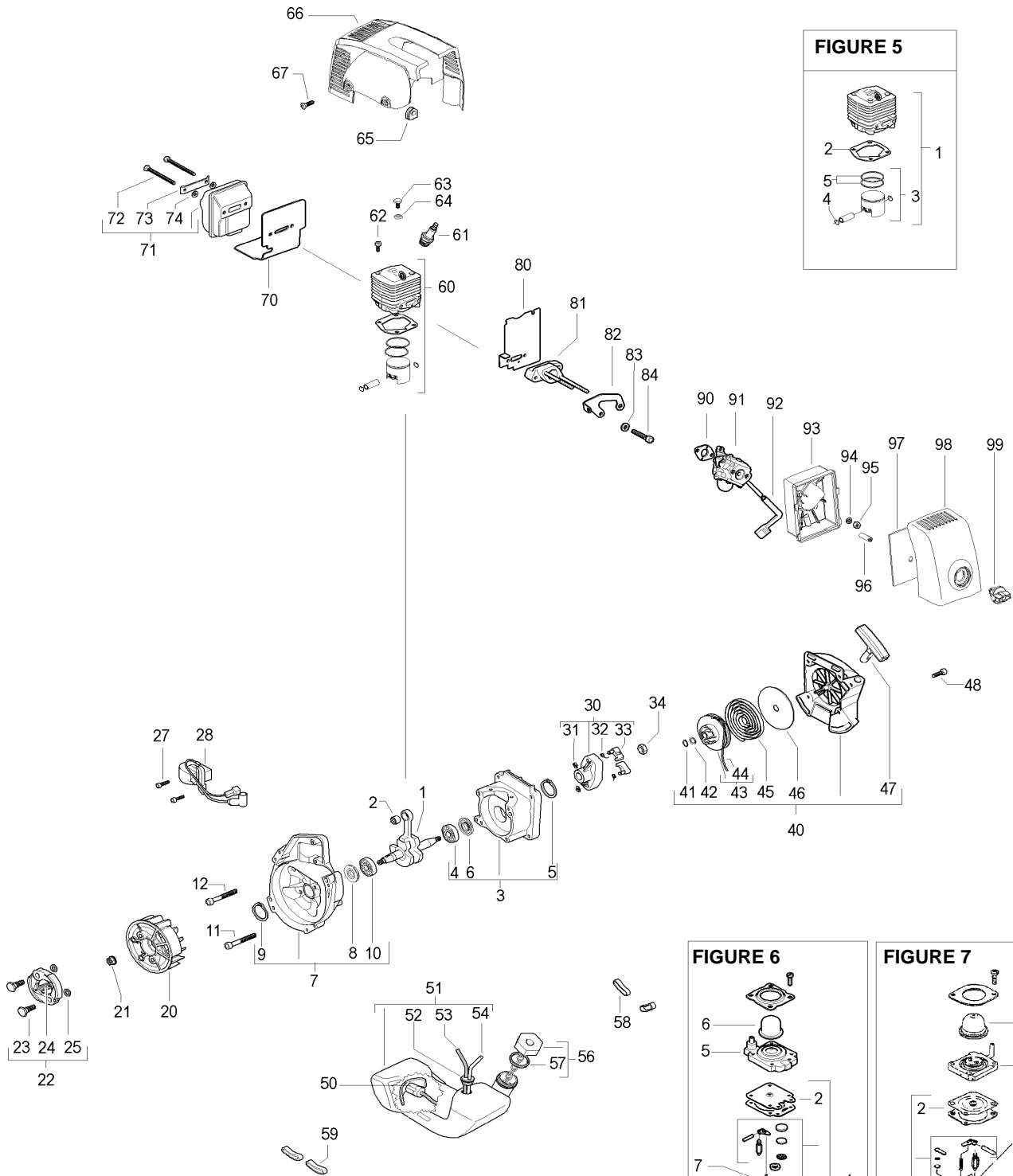
A=ALTA ROTAZIONE
 B=MEDIA ROTAZIONE
 C=ALTA ROTAZIONE
 NUOVI CODICI

A=HIGH MOVING
 B=MEDIUM MOVING
 C=SLOW MOVING
 NEW P. NUMBERS

A=HAUTE DEMANDE
 B=MOYENNE DEMANDE
 C=BASSE DEMANDE
 NOUVELLES REFERENCES

A=GROBE NACHFRAGE
 B=MITTELMAESSIGE
 C=WENIGE NACHFRAGE
 NEU CODEX

FIGURE 4



| Item | P/N McC | P/N ELX | Qty | DESCRIPTION |
|-----------------|-----------------|-----------|-----|------------------------------|
| FIGURE 4 | | | | |
| 1 | 243725 | 538243725 | 1 | crankshaft ass'y |
| C 2 | 501451601 | 501451601 | 1 | needle bearing |
| 3 | 250075 | 538250075 | 1 | carter kit (starter) |
| 4 | • 227541 | 538227541 | 1 | ball bearing |
| 5 | • 240982 | 538240982 | 1 | seeger ring |
| C 6 | • 243174 | 538243174 | 1 | seal |
| 7 | 250074 | 538250074 | 1 | carter kit (flyweel) |
| C 8 | • 243174 | 538243174 | 1 | seal |
| 9 | • 240982 | 538240982 | 1 | seeger ring |
| 10 | • 227541 | 538227541 | 1 | ball bearing |
| 11 | 235804 | 538235804 | 2 | screw M5x30 |
| 12 | 235808 | 538235808 | 2 | screw M5 X 50 TCE |
| 20 | 242673 | 538242673 | 1 | flywheel |
| 21 | 235218 | 538235218 | 1 | nut M8 |
| B 22 | 248808 | 538248808 | 1 | clutch assy |
| 23 | • 242369 | 538242369 | 2 | clutch rod |
| C 24 | • 241270 | 538241270 | 1 | clutch spring elite |
| 25 | • 241076 | 538241076 | 2 | washer |
| 27 | 235806 | 538235806 | 2 | screw M5 X 20 TCE |
| C 28 | 242163 | 538242163 | 1 | ignition coil |
| 30 | 242800 | 538242800 | 1 | starter pawl ass'y |
| 31 | • 111088 | 538111088 | 2 | snap ring |
| B 32 | • 241782 | 538241782 | 2 | spring |
| B 33 | • 241781 | 538241781 | 2 | pawl |
| 34 | 235218 | 538235218 | 1 | nut M8 |
| C 40 | 242809 | 538242809 | 1 | starter assy |
| 41 | • 242786 | 538242786 | 1 | seeger |
| 42 | • 227470 | 538227470 | 1 | washer |
| B 43 | • 249163 | 538249163 | 1 | pulley/rope assy |
| A 44 | •• 227703 | 538227703 | 1 | rope |
| B 45 | • 227300 | 538227300 | 1 | spring rewind |
| 46 | • 227467 | 538227467 | 1 | shield spring |
| 47 | • 240884 | 538240884 | 1 | starter-handle |
| 48 | 235214 | 538235214 | 4 | screw M6x20 |
| A 50 | 240452 | 538240452 | 1 | pick up fuel |
| C 51 | 241541 | 538241541 | 1 | tank mix ass. |
| C 52 | • 235675 | 538235675 | 1 | fueltank grommet |
| B 53 | • 229809 | 538229809 | 1 | hose-fuel mm245 |
| B 54 | • 229743 | 538229743 | 1 | hose fuel mm150 |
| B 56 | 242484 | 538242484 | 1 | fuel cap assy |
| A 57 | • 236564 | 538236564 | 1 | cap gasket |
| 58 | 241248 | 538241248 | 2 | fuel tank grommet (starter) |
| 59 | 241248 | 538241248 | 2 | fuel tank grommet (flywheel) |
| C 60 | FIGURE 5 | | | |
| A 61 | 92878 | 538092878 | 1 | spark plug RDJ6J |
| 62 | 227565 | 538227565 | 4 | screw M5X25 |
| 63 | 243222 | 538243222 | 1 | screw 3/8 - 5/8 (43,36cc) |
| 64 | 242013 | 538242013 | 1 | spacer (43,46cc) |
| 65 | 236322 | 538236322 | 1 | grommet |
| 66 | 243742 | 538243742 | 1 | engine cover |
| 67 | 240688 | 538240688 | 2 | screw m5x14 + washer |
| C 70 | 243767 | 538243767 | 1 | exhaust gasket |
| C 71 | 241432 | 538241432 | 1 | muffler assy |
| 72 | • 227274 | 538227274 | 2 | screw M5X60 |
| 73 | • 227236 | 538227236 | 1 | clamp |
| 74 | • 227259 | 538227259 | 2 | washer |

| Item | P/N McC | P/N ELX | Qty | DESCRIPTION |
|------|--------------------|-----------|-----|------------------|
| 80 | 241428 | 538241428 | 1 | intake gasket |
| 81 | 241434 | 538241434 | 1 | carb. Spacer |
| 82 | 243585 | 538243585 | 1 | plate |
| 83 | 235248 | 538235248 | 2 | washer |
| 84 | 235803 | 538235803 | 2 | screw m5x25 |
| 90 | 227692 | 538227692 | 1 | carb. Gasket |
| 91 | FIGURES 6,7 | | | |
| 92 | 227255 | 538227255 | 1 | choke knob |
| 93 | 249579 | 538049579 | 1 | air filter box |
| 94 | 235248 | 538235248 | 1 | washer |
| 95 | 235642 | 538235642 | 1 | nut m5 |
| 96 | 227143 | 538227143 | 1 | spacer |
| 97 | 243764 | 538243764 | 1 | air filter |
| 98 | 243743 | 538243743 | 1 | air filter cover |
| 99 | 243765 | 538243765 | 1 | knob |

| FIGURE 5 | | | | |
|-----------------|--------------|-----------|---|---------------------------|
| C 1 | 250072 | 538250072 | 1 | cylinder/piston kit 43 cc |
| B 2 | • 242366 | 538242366 | 1 | gasket 0.8 mm |
| B 3 | • 249709 | 538249709 | 1 | piston kit 43 cc |
| 4 | •• 737441000 | 737441000 | 2 | retaining ring |
| B 5 | •• 240085 | 538240085 | 1 | piston ring |

| | | | | |
|-----|--------------|-----------|---|---------------------------|
| C 1 | 250073 | 538250073 | 1 | cylinder/piston kit 46 cc |
| B 2 | • 242366 | 538242366 | 1 | gasket 0.8 mm |
| B 3 | • 249710 | 538249710 | 1 | piston kit 46 cc |
| 4 | •• 737441000 | 737441000 | 2 | retaining ring |
| B 5 | •• 240353 | 538240353 | 1 | piston ring |

| | | | | |
|-----|--------------|-----------|---|---------------------------|
| C 1 | 250084 | 538250084 | 1 | cylinder/piston kit 49 cc |
| B 2 | • 242366 | 538242366 | 1 | gasket 0.8 mm |
| B 3 | • 249711 | 538249711 | 1 | piston kit 49 cc |
| 4 | •• 737441000 | 737441000 | 2 | retaining ring |
| B 5 | •• 503289010 | 503289010 | 1 | piston ring |

| FIGURE 6 | | | | |
|-----------------|-----------|-----------|---|---------------------|
| C - | 242949 | 538242949 | 1 | carb. Walbro WT 694 |
| B 1 | • 229198 | 538229198 | 1 | K repair kit |
| A 2 | •• 229191 | 538229191 | 1 | gasket + diaph. Kit |
| 3 | • 237481 | 538237481 | 1 | idle screw kit |
| 4 | • 237480 | 538237480 | 1 | pump cover |
| C 5 | • 246949 | 538246949 | 1 | primer bulb support |
| C 6 | • 225834 | 538225834 | 1 | primer bulb |
| C 7 | • 246950 | 538246950 | 1 | spring |
| 8 | • 225962 | 538225962 | 1 | choke shaft |

| FIGURE 7 | | | | |
|-----------------|-----------|-----------|---|---------------------|
| C - | - | - | - | carb. Zama C1Q M41 |
| B 1 | • 226226 | 538226226 | 1 | repair kit |
| A 2 | •• 226227 | 538226227 | 1 | gasket + diaph. Kit |
| 3 | • 246945 | 538246945 | 1 | pump cover |
| C 4 | • 246947 | 538246947 | 1 | primer bulb support |
| 5 | • 246946 | 538246946 | 1 | primer bulb |
| 6 | • 246948 | 538246948 | 1 | choke shaft |

A=ALTA ROTAZIONE
 B=MEDIA ROTAZIONE
 C=ALTA ROTAZIONE
 NUOVI CODICI

A=HIGH MOVING
 B=MEDIUM MOVING
 C=SLOW MOVING
 NEW P. NUMBERS

A=HAUTE DEMANDE
 B=MOYENNE DEMANDE
 C=BASSE DEMANDE
 NOUVELLES REFERENCES

A=GROBE NACHFRAGE
 B=MITTELMÄSSIGE
 C=WENIGE NACHFRAGE
 NEU CODEX